

LESSON
2

Geometric Figures

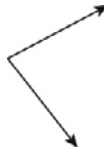
Practice B: Classifying Angles

Tell whether each angle is acute, right, obtuse, or straight.

1.



2.



3.



Use the diagram to tell whether the angles are complementary, supplementary or neither.

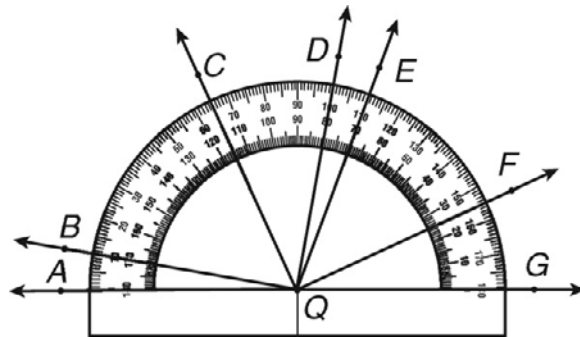
4. $\angle AQC$ and $\angle GQC$

5. $\angle BQD$ and $\angle DQE$

6. $\angle CQE$ and $\angle EQF$

7. $\angle GQF$ and $\angle FQE$

8. $\angle BQC$ and $\angle DQC$



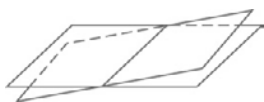
9. Angles W and X are supplementary. If $m\angle W$ is 37° , what is $m\angle X$?

10. Angles S and T are complementary. If $m\angle S$ is 64° , what is $m\angle T$?

11. Angles C and D are supplementary. If $m\angle C$ is 83° , what is $m\angle D$?

12. Angles U and V are complementary. If $m\angle U$ is 41° , what is $m\angle V$?

2. Answers will vary.
Possible answer given.



Problem Solving

Answers may vary.
Possible answers are given

- | | |
|--|--|
| 1. \overleftrightarrow{JK} and \overleftrightarrow{LM} | 2. \overrightarrow{RQ} and \overline{ST} |
| 3. \overleftrightarrow{JK} and \overleftrightarrow{LM} | 4. plane RLM |
| 5. B | 6. J |
| 7. A | 8. G |

Reading Strategies

- line
- line segment
- ray
- congruent line segments
- Possible answer: a flat surface that extends without end in all directions

Puzzles, Twisters & Teasers



B A R K

Answers for Lesson 2

Practice A

- | | |
|------------------|-------------------------------------|
| 1. acute | 2. obtuse |
| 3. right | 4. $60^\circ + 25^\circ = 85^\circ$ |
| 5. neither | 6. $50^\circ + 40^\circ = 90^\circ$ |
| 7. complementary | 8. supplementary |

9. 100° 10. 70°

Practice B

- | | |
|----------------|------------------|
| 1. straight | 2. acute |
| 3. obtuse | 4. supplementary |
| 5. neither | 6. complementary |
| 7. neither | 8. complementary |
| 9. 143° | 10. 26° |
| 11. 97° | 12. 49° |

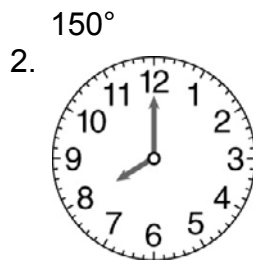
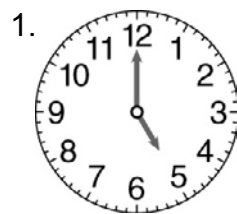
Practice C

- | | |
|-------------------------------|------------------|
| 1. right | 2. obtuse |
| 3. acute | 4. neither |
| 5. complementary | 6. supplementary |
| 7. neither | 8. 74° |
| 9. 102° | |
| 10. supplementary; 58° | |
| 11. complementary; 55° | |

Review for Mastery

- | | |
|-------------------------------|---------------------------|
| 1. 90° ; right | 2. 60° ; acute |
| 3. 120° ; obtuse | 4. 180° ; straight |
| 5. complementary; 90° | |
| 6. supplementary; 180° | |

Challenge



- | | |
|----------------|----------------|
| 150° | |
| 120° | |
| 3. 30° | 4. 60° |
| 5. 132° | 6. 174° |
| 7. 24° | 8. 168° |